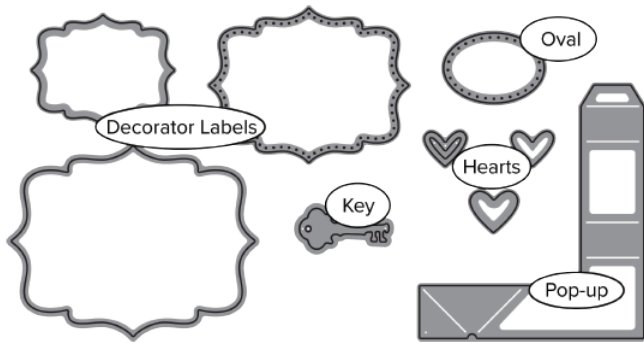


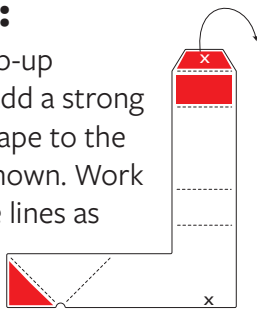


in cahoots with RILEY AND COMPANY

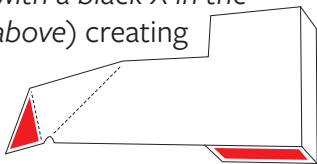


Step One:

Die cut the pop-up platform and add a strong double-sided tape to the three panels shown. Work all of the score lines as mountain folds.

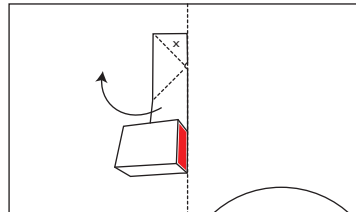


Peel up the tape liner from the angled tab (marked with a white X in the diagram above) and attach it behind the platform at the base (marked with a black X in the diagram above) creating a box, as shown.

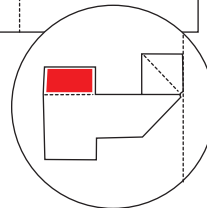


Step Two:

Peel up the tape liner from the triangle and press it to the left side of a card's fold as shown. It can be placed anywhere along the fold.



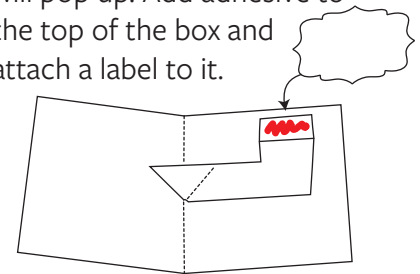
Fold the platform on the diagonal line, bringing the box to the left.



Collapse the box flat so the tape is visible. Peel up the liner of the tape and hold the platform flat while closing the right side of the card and pressing it against the exposed adhesive. This will attach the right side of the card to the box. Minimum recommended card size to hide the pop-up: 4.5" x 4" when folded. (11.4 cm x 10.2 cm)

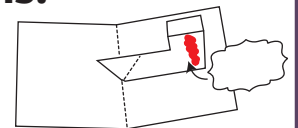
Step Three:

Open the card and the platform will pop up. Add adhesive to the top of the box and attach a label to it.



Variations:

Items can be added to the front of the platform instead of the top for a different look. Experiment with window cards, top-fold cards, gatefold cards, and adding multiple platforms along the same fold. Start with valley folds in Step One to create a mirror image platform to attach to the other side of the fold. Have fun!



View video tutorials at: KARENBURNISTON.COM