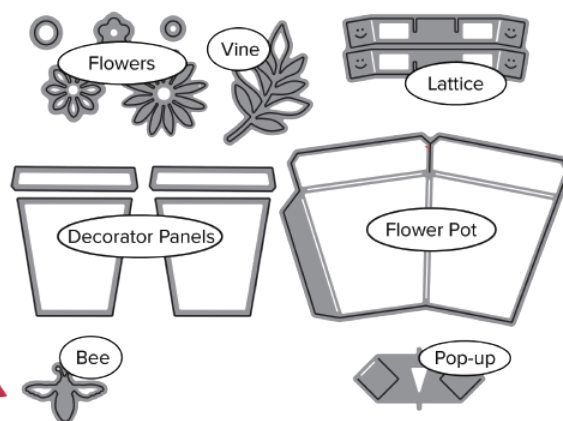
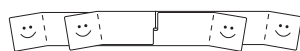
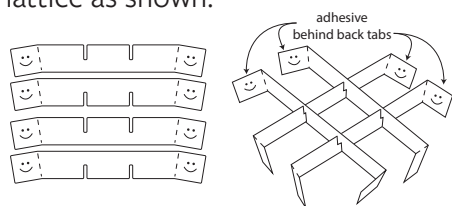


in cahoots with RILEY and COMPANY



Lattice:

Die cut two sets of crossbars and work the folds for the end tabs. Make sure that all tabs are smiling (not frowning) before notching all the pieces together to make a lattice as shown.

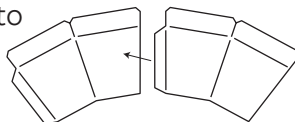


Collapse the lattice into a straight line. Add adhesive behind the four back tabs.

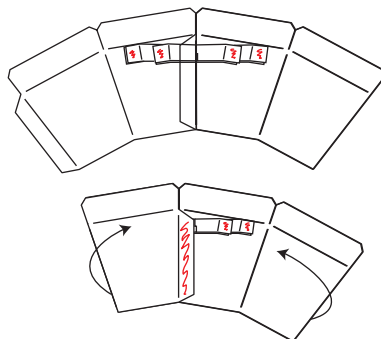


Flower Pot:

Die cut two flower pot halves and use adhesive under the side tab to join them into one 4-panel piece.

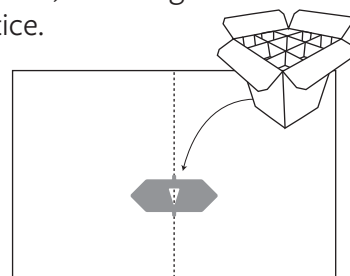


Center the lattice strip over the center seam of the pot and press the four sticky tabs to the pot. The top edges of the outer tabs will line up with the score lines in the pot. Add adhesive to the top of the other four tabs. Fold in the panel with the side tab first. Add adhesive to the top of the tab and fold the other side of the pot.



Pop-up:

Use the alignment nubs to place the pop-up die over the fold of the card with the arrow pointing forward and die cut. Fold up the tabs and attach them inside the pot. Fill and decorate the pot as desired, attaching items to the lattice.



To cover the holes on the front/back of the card, use paper panels or strips. If a folded backing card is preferred, first use a craft knife to cut mostly through the fold of the backing card to allow it to open fully flat. The minimum recommended card size to hide a filled pot: 5" x 6" when folded. (12.7 cm x 15.2 cm)

View video tutorials at: KARBURNISTON.COM