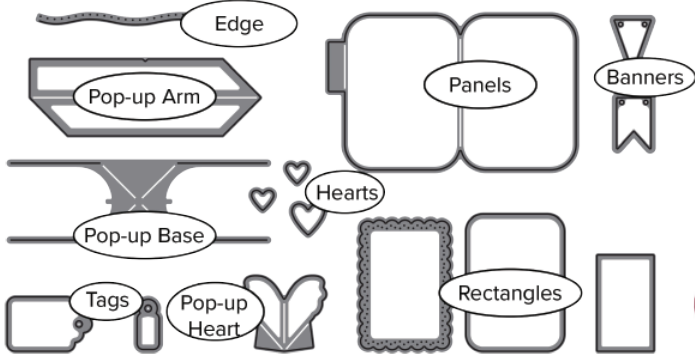


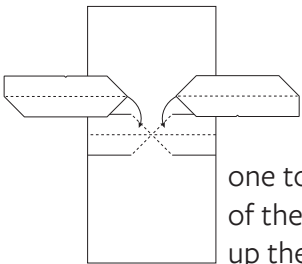
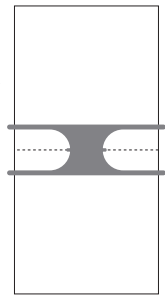


in cahoots with RILEY AND COMPANY



Pop-up Base:

Make sure the alignment nubs are directly over the fold of a card measuring less than 5" (12.7 cm) wide and die cut the base.



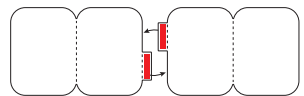
Die cut two arm pieces and glue one to each side of the base, lining up the points and the center folds. Work all the folds and then flatten again.

Work all the folds and then flatten again.



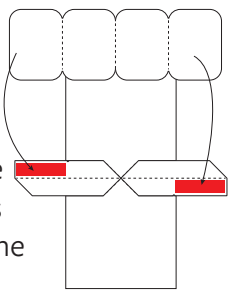
Panels:

Die cut two sets of panels and use the tabs to join them into one long strip.



Add adhesive to the ends of the arms as shown. The adhesive should be placed on the side of the arm that has a square corner.

Stop the adhesive at the notches in the arms. Add the panel strip to the arms, lining up the ends of the panels with the ends of the arms.

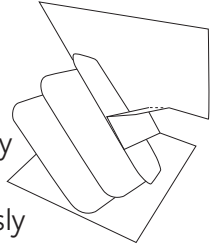


Sizes:

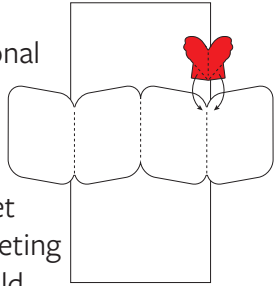
Minimum card size to hide the pop-up: 4" x 4.5" (10.2 cm x 11.4 cm) when folded.
Panels: 2.25" x 3" (5.7 cm x 7.6 cm)

Finishing:

Train the pop-up by lifting the arms while simultaneously closing the card, causing the arms to fold up their centers and the panels to twist counter-clockwise. Glue the pop-up card inside a larger backing card.



Glue the optional heart pop-ups into the valley folding the feet under and meeting them in the fold.



View video tutorials at: KARENBURNISTON.COM